

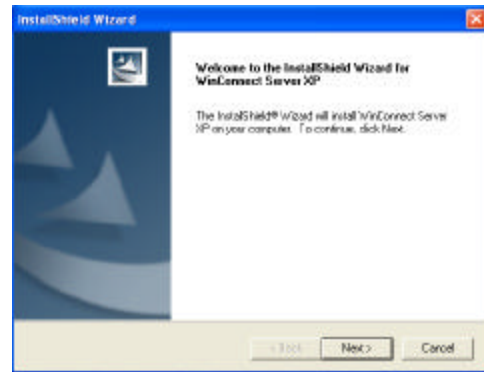
WinConnect Server XP

Quick Start Guide

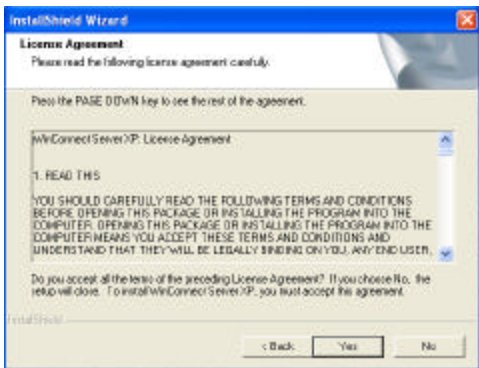
Getting Started Throughout the registration you may see the screen below. If so, please click 'yes' each time it appears. This will allow the loading of files that are critical to this process.



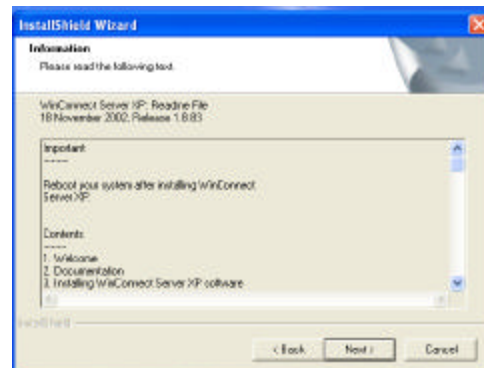
Step 1 After loading Windows XP Professional, load the WinConnect CD and initiate InstallShield. Click "Next."



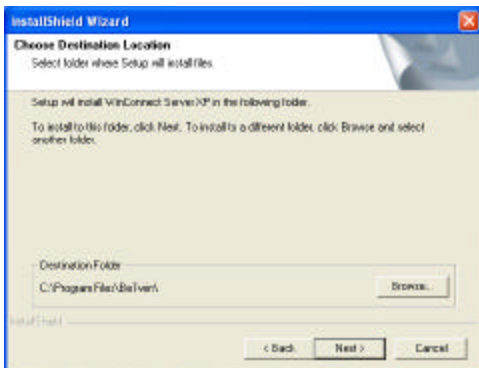
Step 2 Read licensing agreement and click "Next."



Step 3 Read Information page and click "Next."



Step 4 Select directory in which to install WinConnect (or use default directory) and click "Next."



Step 5 Click "Next" to begin copying files.

